



# Knowle Hockey Newsletter

## Welcome to Issue 2!

**TRAINING** will start again Monday 7th September 7pm at Merchant Academy. For the 2015/16 Season a doodle will be sent out for training sessions. We believe that players are ready to progress both individually and as teams. The best way to do this is at training. To be able to liaise effectively with Pat and make the sessions progressive, training will need to be planned. To enable Pat to do this, he needs to know

who is attending. We appreciate that it is not always possible to be at training every week; however, most people should be able to commit to at least one training session a month. There is great potential just waiting to be unlocked in the teams, but without training together this would be a virtually impossible task.

- Sue and Catherine

## Changes to team selections

**FOR** the 2015/16 season, Sue and Catherine have decided to change the way they select players for league matches. They have collated a list of players in order of their preferred position, (this list will be emailed to all Knowle Hockey members. (If anyone would like to change their position, they will have the opportunity to do so). Sue and Catherine will then use the doodle to select first and second teams from all players that have indicated they are available. That way there can be a sharing of players amongst both teams, whilst enabling the differing objectives of both to be met.

This suggestion was proposed by Sue and Catherine at the committee

If you have anything you would like to add to the next newsletter please email me:

johanneverrall@googlemail.com

[www.knowlehockey.co.uk](http://www.knowlehockey.co.uk)



## Dates for your diary

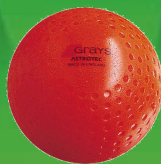
### 5th September, Club Day

10am—11am	Registration and kit ordering
11am—2pm	Welcome, Training and Game
2pm—3pm	Teas

## Kit and Ordering

**YOU** can order kit on the club day. Please bring cash or cheques.

Coming soon will be changes to the site which will allow people to browse the available kit options and place orders online specifying colours, sizes and where applicable styling options. Currently the kit is being reviewed and alternative suppliers considered. Watch this space!



# Knowle Hockey Newsletter

		P	W	D	L	F	A	+/-	Pts		
1	—	■	Pucklechurch Ladies' Summer	12	9	1	2	41	10	31	28
2	—	■	Yate Womens Summer	12	8	1	3	29	18	11	25
3	—	■	City of Bath Ladies Frys	12	7	3	2	33	10	23	24
4	—	■	Wick Womens Summer	12	7	2	3	36	21	15	23
5	—	■	Jaspers Womens Summer	12	7	0	5	27	16	11	21
6	—	■	Old Bristolians Ladies Summer 3	11	7	0	4	35	30	5	21
7	—	■	BAC Ladies Summer	11	7	0	4	30	25	5	21
8	—	■	Westberries Womens Summer	11	5	1	5	18	17	1	16
9	—	■	Keynsham Ladies' Summer 2	11	2	3	6	16	28	-12	9
10	—	■	Keynsham Ladies' Summer 1	12	2	3	7	16	30	-14	9
11	—	■	Bristol ladies Womens Summer	12	2	1	9	10	34	-24	7
12	—	■	Knowle Ladies 1st XI	11	1	3	7	6	35	-29	6
13	—	■	Knowle Ladies 2	11	1	2	8	10	33	-23	5

## Summer League Results

**Knowle1** Won 1|Drew 3|Lost 7|Total Goals Scored—6

**Knowle2** Won 1|Drew 2|Lost 8|Total Goals Scored—10

**WELL** done everyone who took part, we may not have come top of the table, but I am sure you all agree we had a lot of fun!

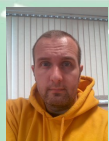
## Annual Fees and Match Fees

**FEES** are due!. Please can you provide full payment preferably on club day but no later than the first league match. If you would like to pay half now, half January, please provide Julia with a post dated cheque. Please make cheques payable to **"Knowle Ladies Hockey Club"**

Over 18's—£70

Under 18's—£35

Students—£35



## Umpires Corner—CAPTAINS PLEASE!

So what's really involved when you step forward to answer the umpires call "CAPTAINS PLEASE!?" This article focuses on the official responsibilities.

Players know the captain handle the coin toss and sign the score sheet at the end of the game. Many don't realise that they can be carded as the captain if team members mess up. So let's walk through from start to finish.

Prior to the start of the match. The umpires call the captains forward, everyone introduces them self and the umpires brief the captains on how they want to run the game, usually plenty of advantage, play the whistle and mind bad language. The captains mention anything they think relevant to the game. Captains are expected to communicate the content of this briefing to the teams. A coin is tossed and the winning captain chooses either first push back or which half they wish to defend.

During the match. Captains are responsible for the conduct of their teams. If the team messes up the substitutions and end up with too many players on the pitch, the captain gets carded. If there are offences where the team are at fault rather than an individual, such as slow restarts and intentional time wasting, the captain can get carded.

End of match - Complete the paperwork, it's important.

Remember - If you are the nominated captain and are prepared to step forward for the pre-match briefing, be prepared to lead. It annoys everyone and slows the game when captains keep differing decisions to other players or the person who really should be captain.